



www.hascokorea.co.kr

HANKOOK STEEL

+ CONTENTS



Chapter 1

COMPANY PROFILE

Chapter 2

ORGANIZATION

Chapter 3

MANUFACTURING FACILITY

Chapter 4

MANUFACTURING PROCESS

Chapter 5

ACTUAL OUTPUT

Chapter 6

CUSTOMERS

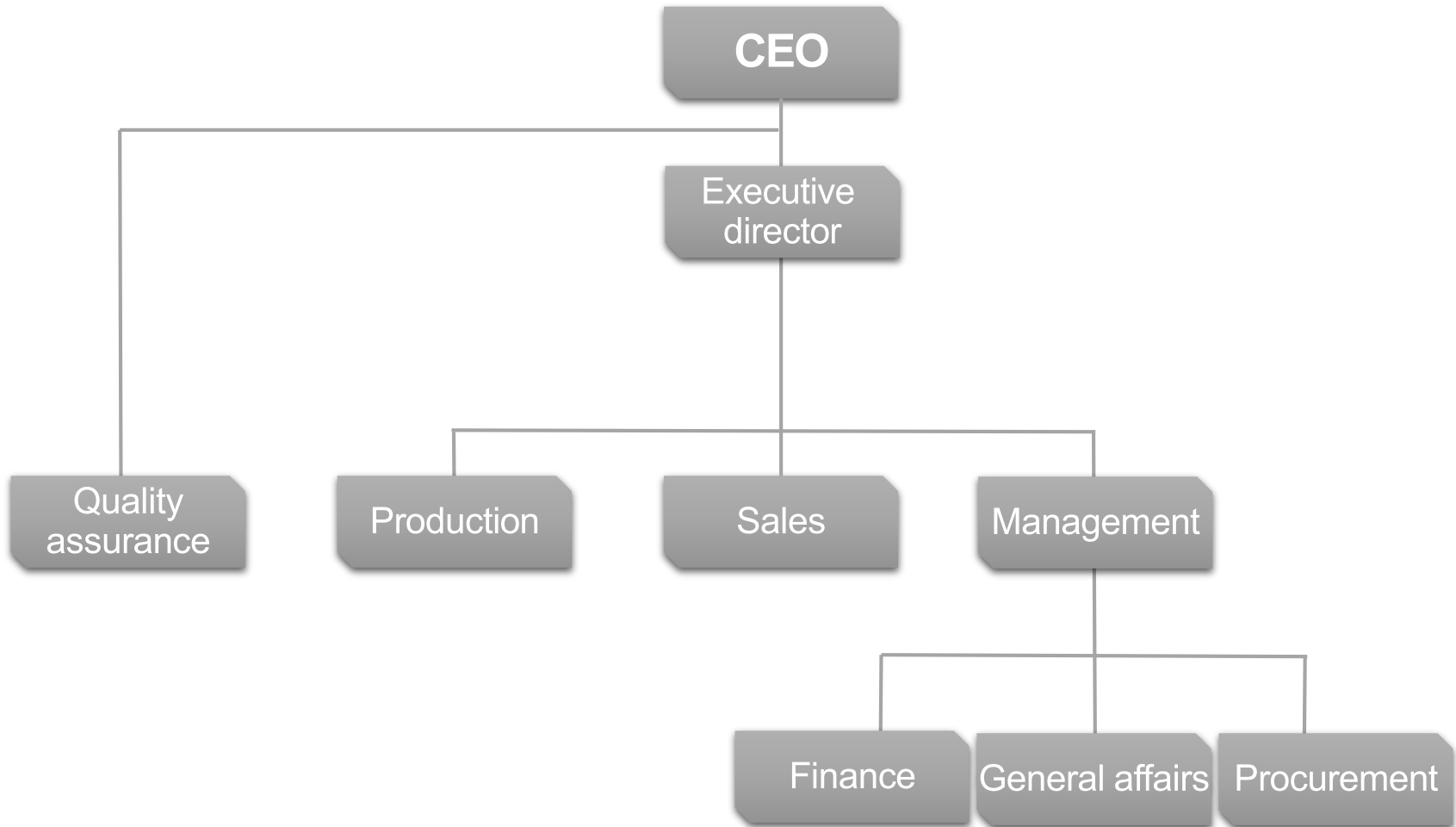
Chapter 7

FACTORY LAYOUT

+ COMPANY PROFILE

- 1 COMPANY NAME : HANKOOK STEEL CO.,LTD.
- 2 ESTABLISHMENT : SEP, 1987
- 3 CAPITAL : \$5.4 MILLIONS
- 4 TYPE OF BUSINESS : STEEL CASTINGS
- 5 ADDRESS : #585,JANGBAEK,BEOPSU,HAMAN,GYEONGNAM,KOREA.
- 6 WEB SITE : www.hascokorea.co.kr

+ ORGANIZATION



+ MANUFACTURING FACILITY- 1



- Name : Electric Arc Furnace
- Capacity : 50 ton
- Remark : carbon steel & low alloy steel

Name : Induction furnace

Capacity : 10 ton x 2 units

Remark : Stainless steel



+ MANUFACTURING FACILITY- 2



■ Name : Ladle furnace x 2 units

■ Capacity : 50 ton, 30 ton

■ Remark : Refining

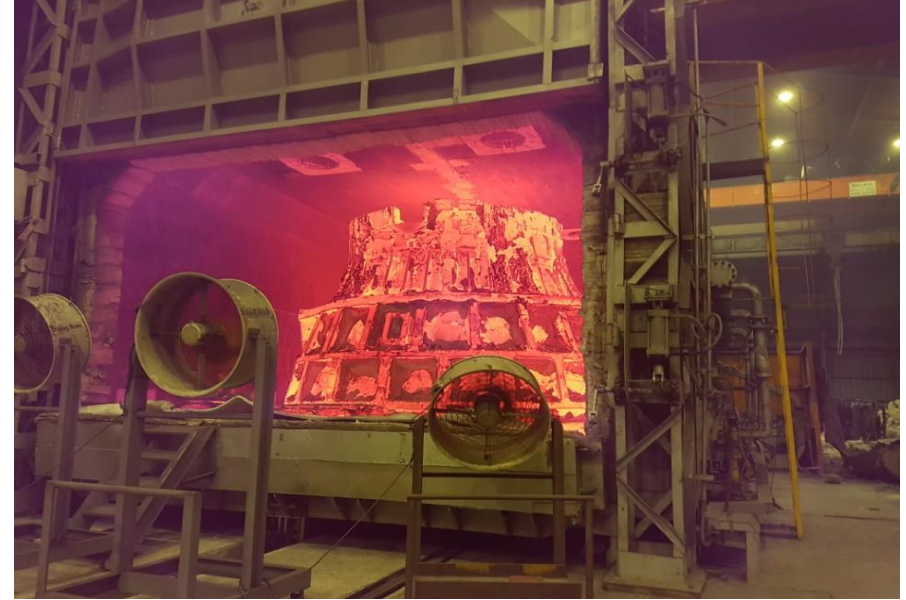
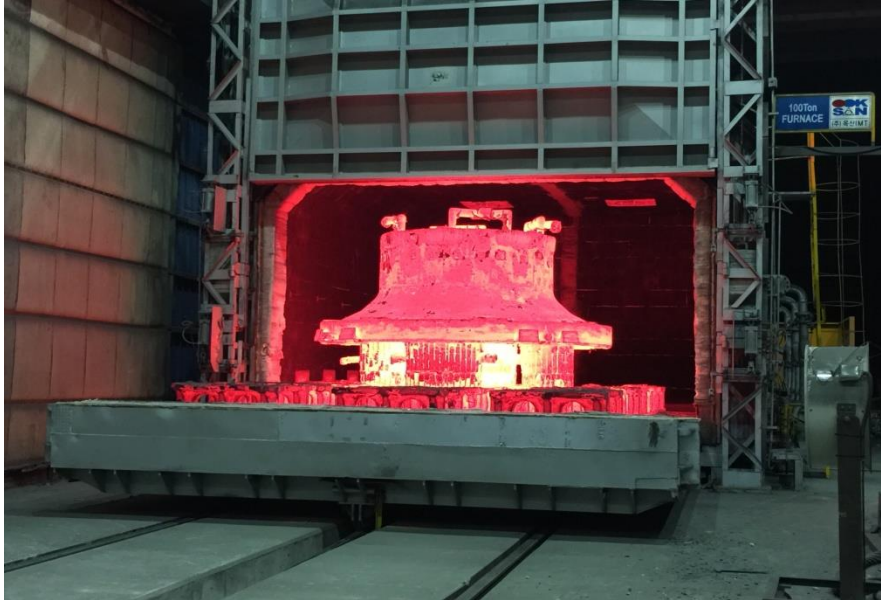
Name : Vacuum degassing

Capacity : 50 ton

Remark : Elimination of H.N.O



+ MANUFACTURING FACILITY- 3



Name : Heat treatment furnace

Capacity : 200ton - 7000 x 10000 x 4000H 100ton - 7000 x 10000 x 4000H
50ton - 4200 x 3000 x 2500H * 2 UNITS 30ton - 6200 x 4400 x 2300H

Remark : Annealing & normalizing & stress relief

+ MANUFACTURING FACILITY- 4



Name : Vacuum oxygen decarburization

Capacity : 30ton

Remark : Stainless steel



Name : Electro slag re-melting

Capacity : 8ton

Remark : High-clean steel



Name : Shot blast

Capacity : 150ton

Remark : Rail type

+ TEST EQUIPMENT

Name	Capacity	Model	Maker
Optical Emission Spectrometer	31 Channel	PDA-7000	SHIMADZU/JAPAN
Carbon and Sulfur Determinator	-	CS230	LECO/USA
H/N/O Determinator	-	TCH600	LECO/USA
UTM	30 ton	DTU-900HC	DAEYOUNG/KOREA
Charpy impact Tester	500J	KTM-500	KTM/KOREA
Hardness Tester	3000kgf	SBH-3	SINPOONG/KOREA



STEEL SPECIFICATION

- SC360, 410, 450, 480
- SCPH1, 2, 11, 21, 22, 23, 32, 61
- SCC3A, 3B, 5A, 5B
- SCMn2A, 2B
- SCMn3A, 3B
- SCMnCrM2A, 2B, 3A, 3B
- SCW410, 450, 480, 550, 620,
- SCPL1, 11, 21, 31, SCS1, 6, 13A
- SCMn1A, 1B, 2A, 2B, 3A, 3B, 5A, 5B,
- SCMnCr2A, 2B, 3A, 3B, 4A, 4B
- SCCrM1A, 1B, 3A, 3B
- SCNCrM2A, 2B

Product Size (Max) : W7,000 X L10,000 X H4,000 (Equal : Heat Treatment Furnace Size)

Product Weight (Max) : 130 ton as cast weight, 100~110 ton as final machined weight

Melting Weight (Max) : 195 ton (65ton X 3charge)

+ MANUFACTURING PROCESS



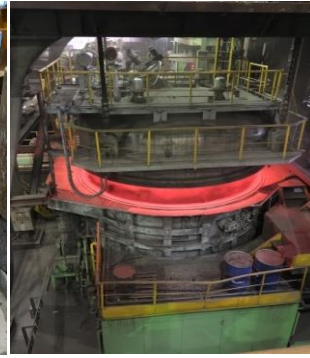
WOODEN PATTERN



MOLDING



ASSEMBLY



MELTING&REFINING



POURING



SHAKE OUT



RISER CUTTING



HEAT TREATMENT



ROUGH M/C



N.D.E



FINAL INSPECTION



ASSEMBLY INSPECTION

+ ACTUAL OUTPUT (SHIPBUILDING)



TILLER



STERN BOSS



HUB CASTING

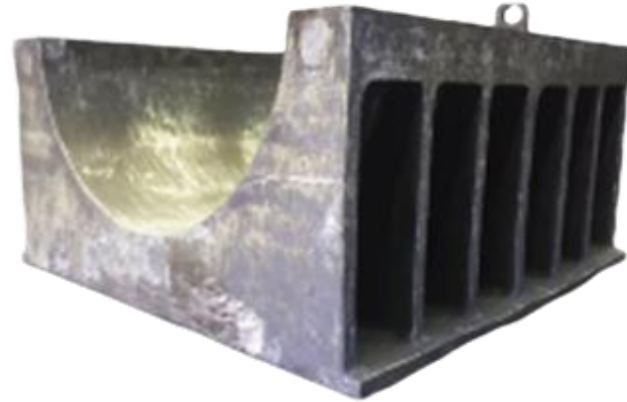


RUDDER HORN

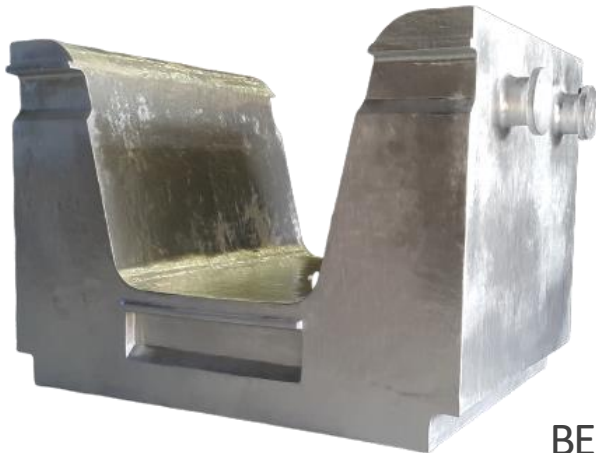
+ ACTUAL OUTPUT (GENERAL INDUSTRY)



FRAME



TEE DIE



BENDING DIE



CROWN

+ ACTUAL OUTPUT (STEEL&MILL)



ROLL CHOCK



MILL HOUSING



TRUNNION BLOCK



SLAG POT

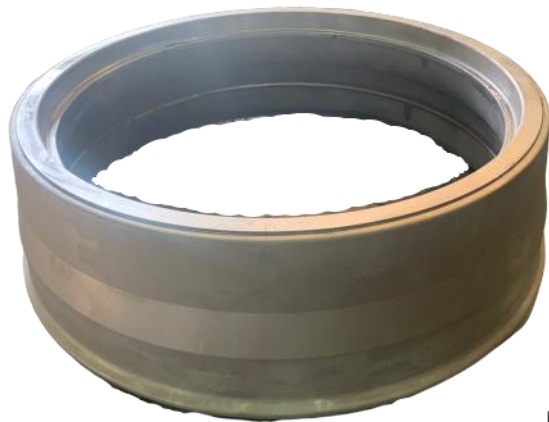
+
ACTUAL OUTPUT (CEMENT)



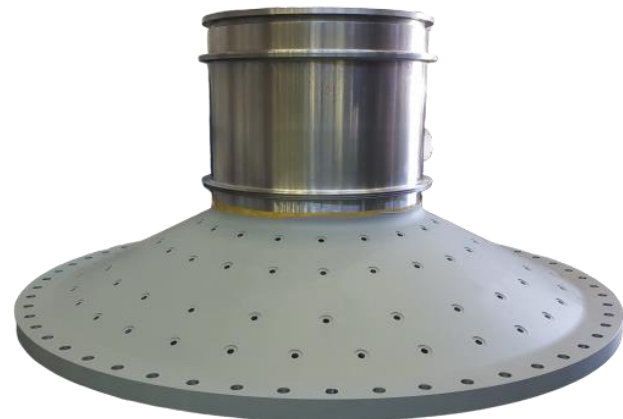
KYLN TIRE



GIRTH GEAR



ROLLER



TRUNNION

+ CUSTOMERS



Thank you



FACTORY TOUR

● : Current location
➔ : Factory tour line

